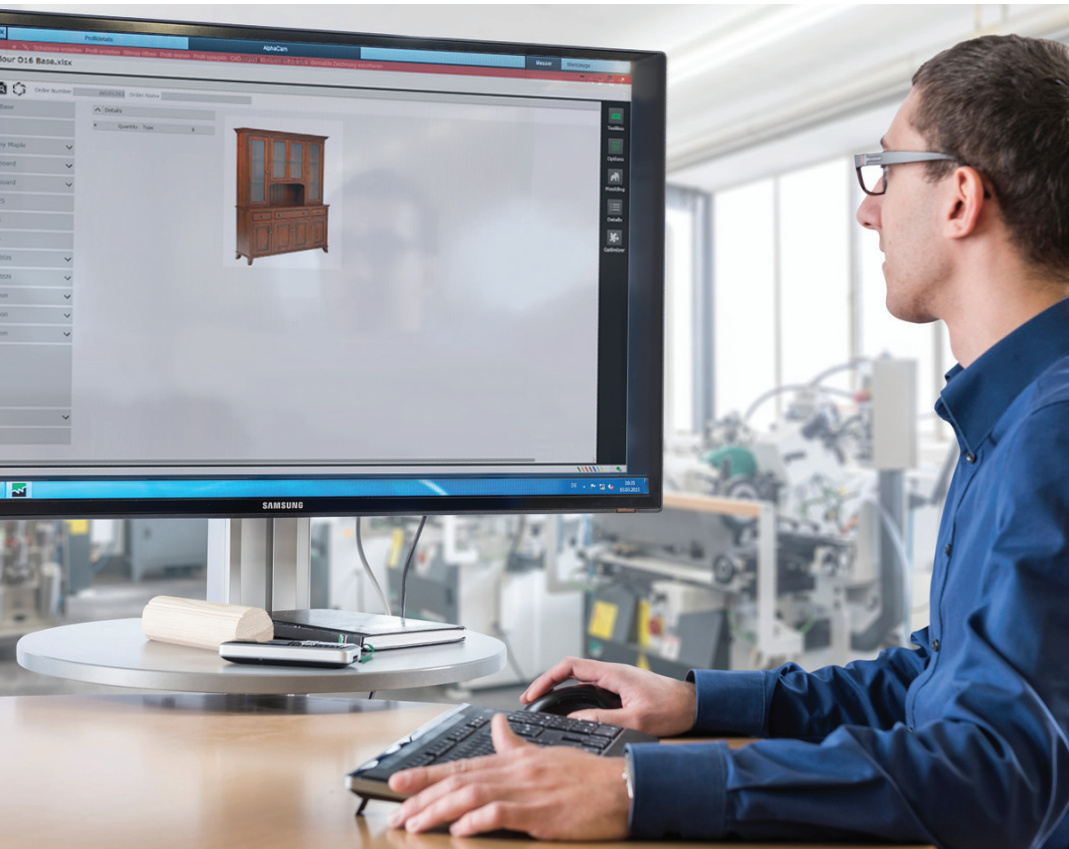




# EnVision

Software to ensure maximum flexibility for on-demand production



Everything for solid wood processing.  
Everything from a single source. Everything 100%!



**Advantage Solutions, Inc.**  
Your authorized Holz-Her dealer  
Phone: 651.760.4355  
Email: [Sales@AdvantageSolutionsOnline.com](mailto:Sales@AdvantageSolutionsOnline.com)  
[www.AdvantageSolutionsOnline.com](http://www.AdvantageSolutionsOnline.com)

# EnVision

Make what your customers want,  
when they want it.  
EnVision your advantage.

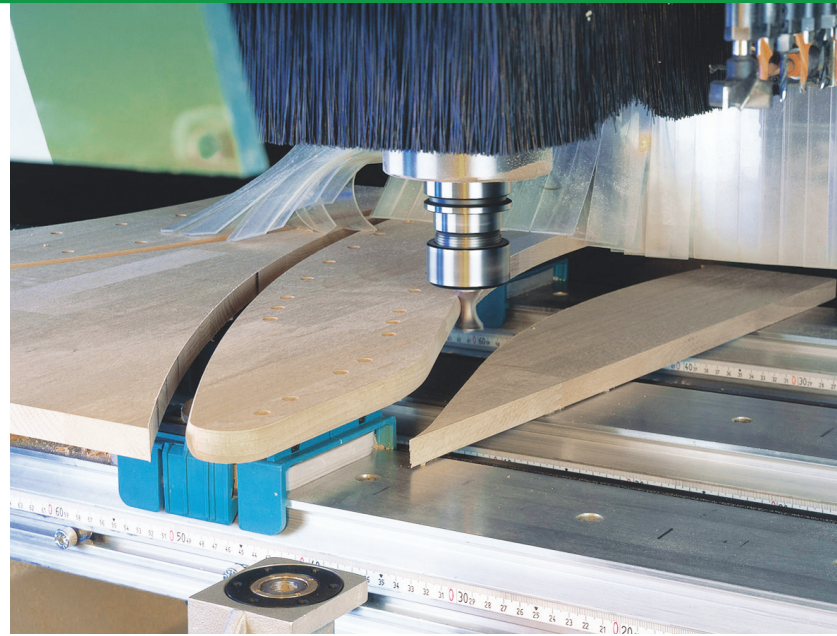
Break out of traditional manufacturing methods  
with a highly flexible system for on-demand  
production

## EnVision Solid Wood Advantages

- True parametric joinery for your entire product
  - Furniture, doors—stiles, rails, insert—all adjusted simultaneously
- Preview of DXF drawings instantly (as size adjustments are made) <sup>1</sup>
- View full break out of the entire cut-list
- Produce solid wood joinery without the need for traditional dedicated machinery and personnel <sup>2</sup>
  - No miter and mortise machines, dovetail drawer box machines, or coping machines are required

## EnVision Panel Processing Advantages

- Design parametric cabinets for simple and easy changes as well as the solid wood door components
- Customize on-demand
- Alter the sizes of your products as you require
- EnVision connects with your WEINIG and HOLZ-HER equipment: <sup>2</sup>
  - Moulder Tool Room
  - Rip Saw
  - Beam Saw
  - CNC Machines (Point-to-Point, nested, vertical CNC machining centers, possible third party saws)



Discover the benefits of time and labor savings as EnVision software streamlines your production process.

The paperless environment eliminates the need for WIP and staging material. Bills of material are created dynamically by automatically connecting to your WEINIG and HOLZ-HER equipment.

EnVision also allows you to create and customize your label data, adding a high degree of flexibility to suit your needs.

With special options, your software can achieve even more:

- maintain your order database and track individual orders <sup>3</sup>
- maintain your customer database <sup>3</sup>
- email receipts <sup>3</sup>
- track your billables and your sales team's sales <sup>3</sup>

<sup>1</sup> Assembly DXF drawings are limited to parallel and perpendicular positioning

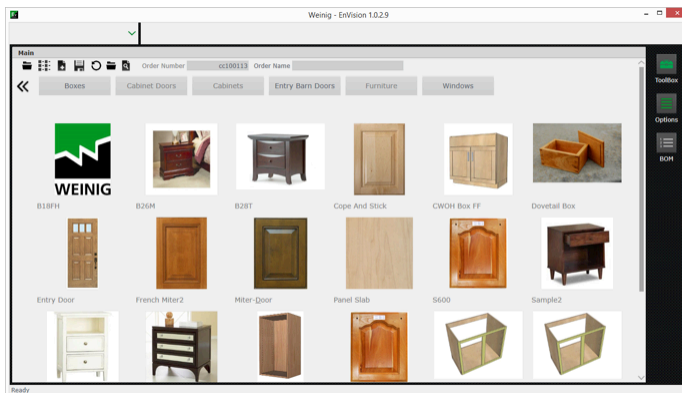
<sup>2</sup> Requires Joinery Package upgrade

<sup>3</sup> Requires Office Package upgrade

The elements of EnVision software combine to provide flexibility and time savings.

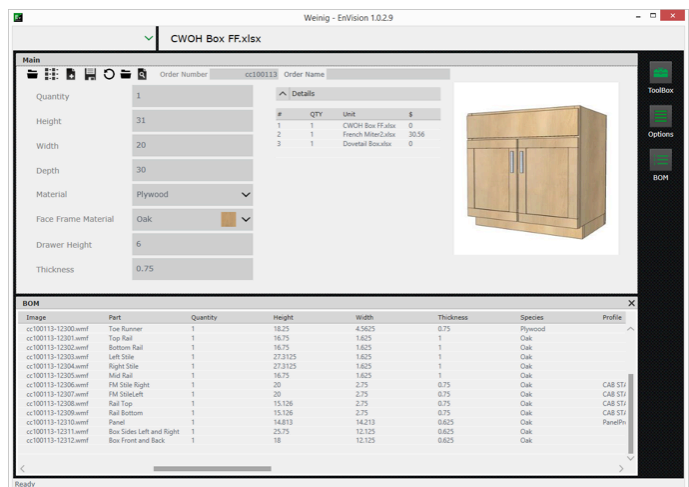
### Visual Browsing

- Navigate your catalog to find the correct template
- Visualize browsing reduces mistakes and confirms to the user what to do



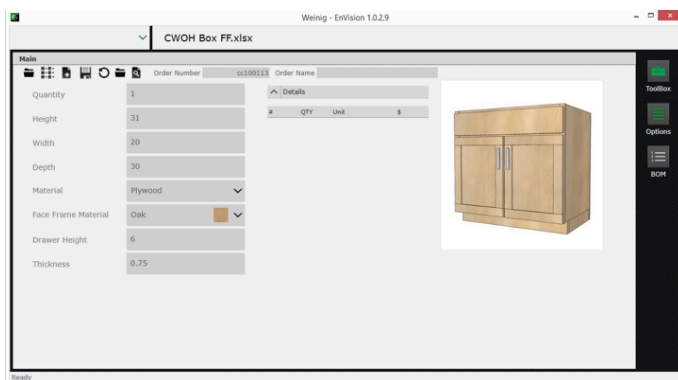
### Bill of Material Generation

- EnVision will visualize the BOM as it is generated and provide previews of part detail



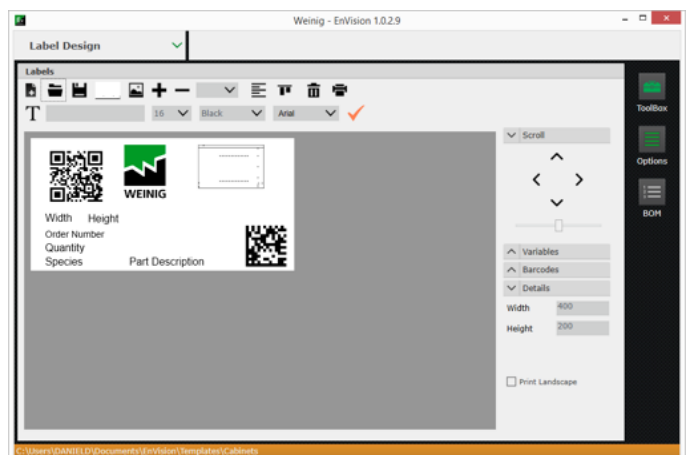
### Product Editing

- Order variables are set when the template is created
- Each template displays the elements the designer chooses to have available at order time



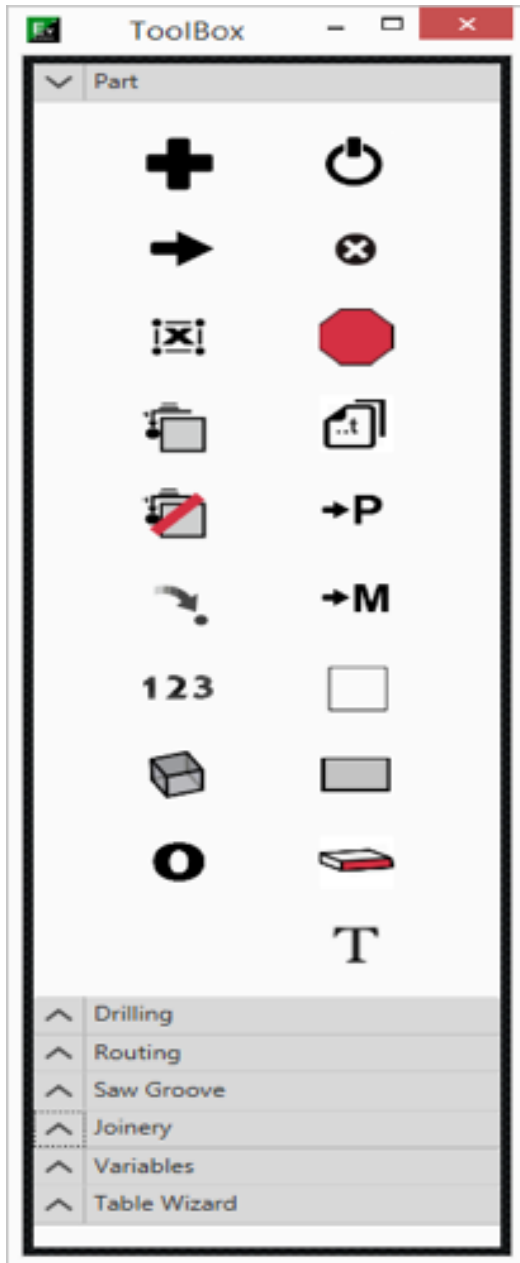
### Label Design Environment

- EnVision provides the coordination of user-defined variables within templates and makes them available for inclusion in labels.



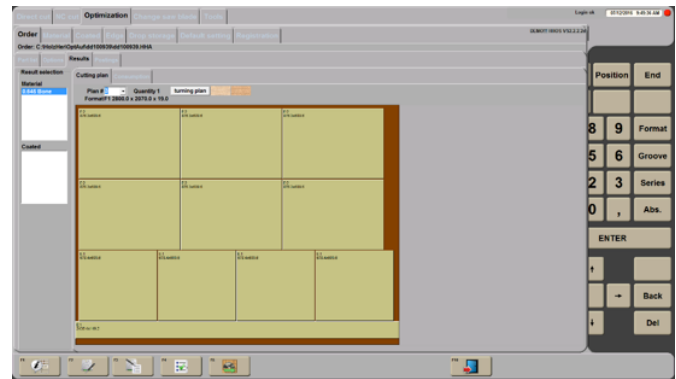
## ToolBox

- EnVision provides a toolbox to make template creation and easy variable coordination hassle-free
- Depending on options purchased, the toolbox will reflect all of the functions available



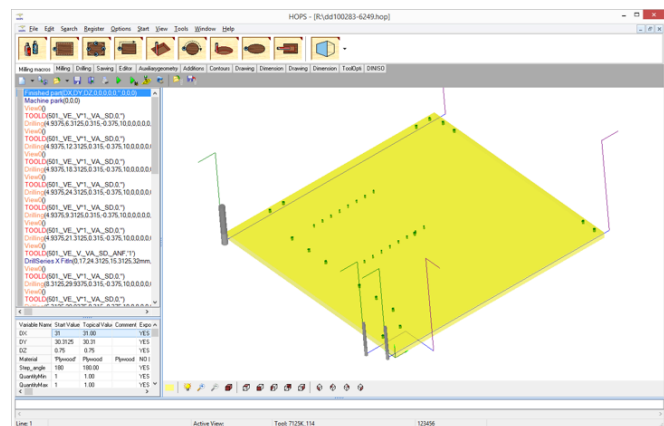
## Integration with Beam Saw (included)

- EnVision can automatically link up with Holz-Her panel saws
- Parts can be designated into types for greater control at run time
- Labels are produced automatically for proper part identification



## CNC Programming

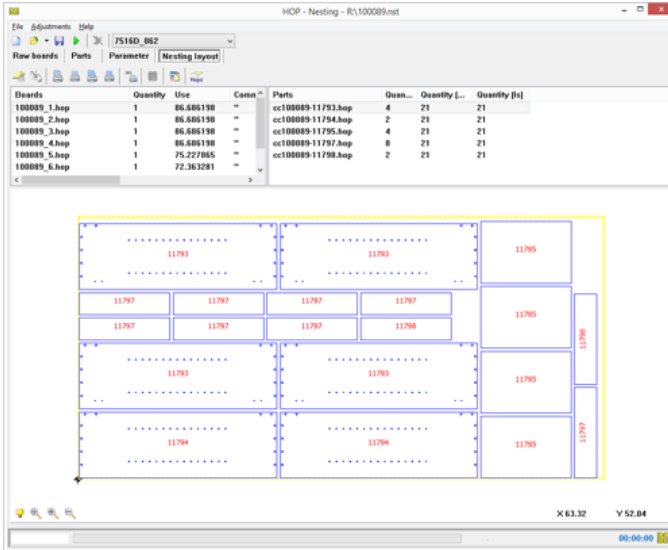
- EnVision will create parametric g-code to be run on any Holz-Her CNC machine
- Within the available instructions provided with EnVision, g-code will be produced for each part based on the order definition



# Options

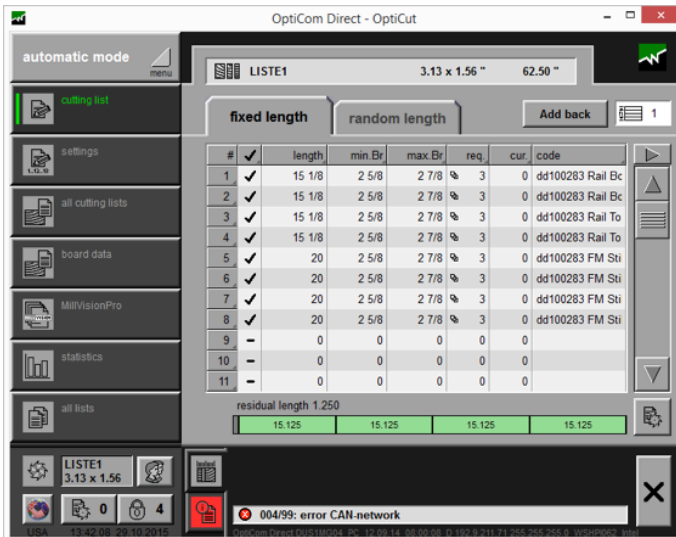
## Nesting (optional)

- Via BetterNest, EnVision will coordinate all instructions for BetterNest to produce nested solutions



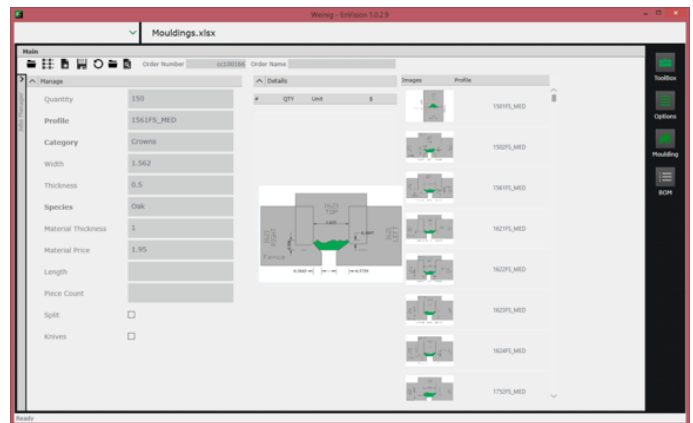
## Solid Wood Processing (optional/modular)

- EnVision can automatically link up with Weinig crosscut saws, rip saws, and moulder tool rooms
- Values are assigned to get the best possible yields, and order data is stored in a server database for easy access on machines



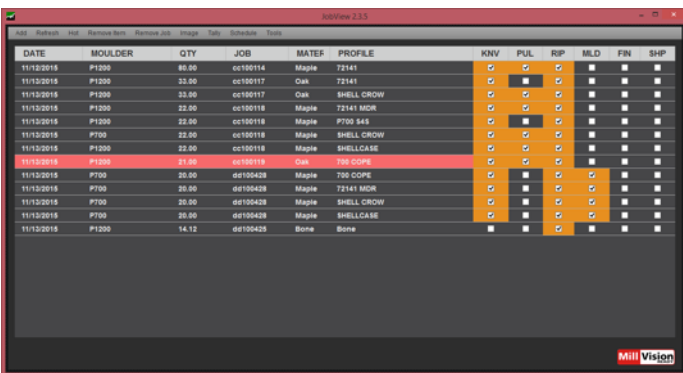
## Mouldings Package

- Allows users to navigate the entire PowerCom profile catalog by name or category
- Combined with a materials catalog, your pricing and orders are put together easily and readied for production
- As orders are completed, the individual ordered items are prepared for the ripping process
- Attributes like width, thickness, and category are recalled with the profile name for quick quoting
- Materials are added per item with cost for lumber added
- All of this detail is then sent to a spreadsheet compiled and then added to the Bill of Materials



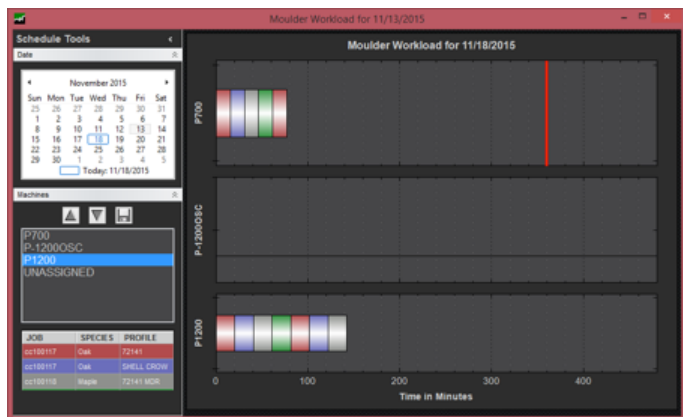
## JobView (optional/modular)

JobView software presents the priority and real-time status of orders as they are processed throughout your entire facility. This allows a quick comparison of committed jobs and your moulder capacity for any day. With JobView at different workstations, an operator can easily view the jobs that are scheduled and mark the completion of each operation.

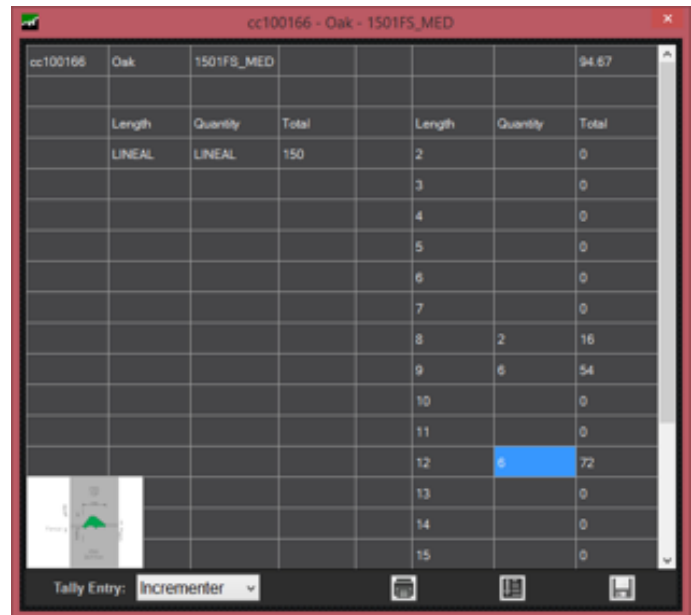


DATE	MOULDER	QTY	JOB	MATER	PROFILE	KNV	PUL	RFP	MLD	FIN	SHP
11/12/2015	P1200	86.00	cc100114	Maple	72141						
11/12/2015	P1200	33.00	cc100117	Oak	SHELL CROW						
11/12/2015	P1200	22.00	cc100118	Maple	72141 MDR						
11/12/2015	P1200	22.00	cc100118	Maple	P700 S45						
11/12/2015	P700	22.00	cc100118	Maple	SHELL CROW						
11/12/2015	P1200	22.00	cc100118	Maple	SHELLCASE						
11/12/2015	P1200	21.00	cc100119	Oak	700 COPE						
11/12/2015	P700	20.00	dd100428	Maple	700 COPE						
11/12/2015	P700	20.00	dd100428	Maple	72141 MDR						
11/12/2015	P700	20.00	dd100428	Maple	SHELL CROW						
11/12/2015	P700	20.00	dd100428	Maple	SHELLCASE						
11/12/2015	P1200	14.12	dd100425	Bone	Bone						

- Keep track of the ordered items as they pass through each step in the process
- JobView will give you access to the items, establish a working order via the visual schedule tool...



- ...and back-tally and itemize the parts after they have been cutback for packing



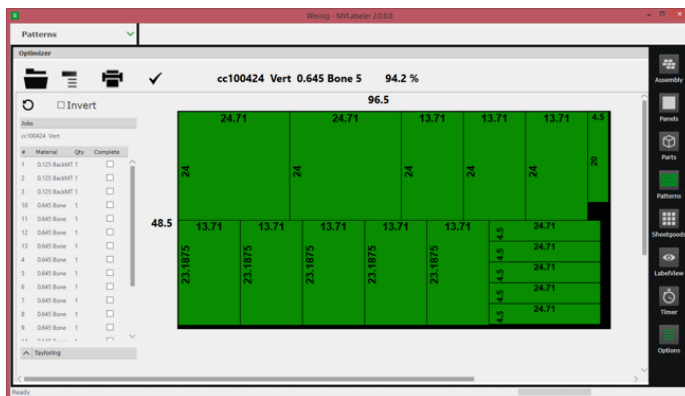
cc:100166	Oak	1501FS_MED				94.67
Length	Quantity	Total	Length	Quantity	Total	
LINEAL	LINEAL	150	2		0	
			3		0	
			4		0	
			5		0	
			6		0	
			7		0	
			8	2	16	
			9	6	54	
			10		0	
			11		0	
			12	6	72	
			13		0	
			14		0	
			15		0	

## MV Labeler (optional/modular)

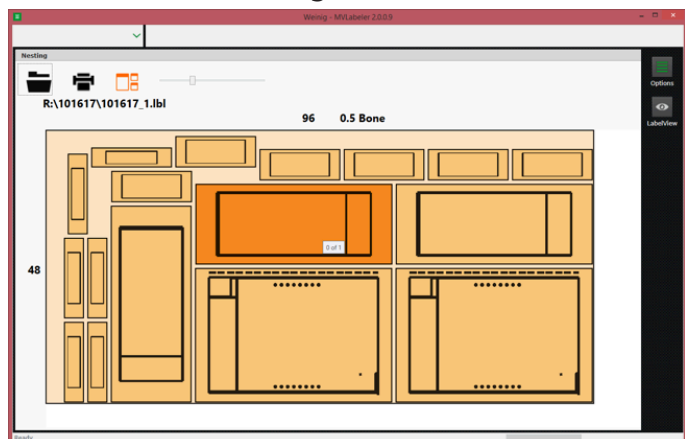
Choose the data you deem necessary on your component labels to ensure that each job is grouped correctly for quick and easy assembly and shipment to your customers. Custom design your parts, panels and assembly labels. Create your labels to easily identify your parts throughout the machining process.

- Complete Package
  - Identifies list items for printing labels on demand from centralized database
  - Included Sheetgood optimizer for optimizing parts into patterns to be manually cut and labeled on demand from a slider or vertical saw
  - Add MV Labeler to 3 additional PC's in your shop (for Windows XP or newer--PC not included—priced per seat)

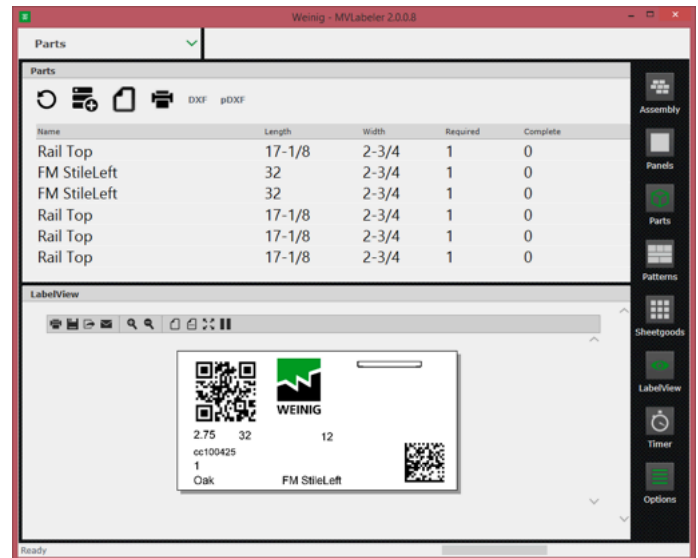
### MV Labeler for Sheetgood Patterns



### MV Labeler for Nesting



### MV Labeler for Parts



### EnVision Software Details

- Price Includes 1-site license and 3 office seats of EnVision Software, remote installation/upgrade of software
- On-Site installation available at cost of travel expenses of technician

#### Note 1:

- All software is to be purchased on a “per seat”, “per site” license
- The “per site” is defined as a specific building
- The “per seat” is defined as a specific computer

#### Note 2:

- No hardware is included with the purchase of any of the software
- All hardware including PC's, barcode readers etc. will need to be approved prior to installation



## **WEINIG Quality: Machines and Systems for Solid Wood Processing**

WEINIG is synonymous with technological advancement—and has been for more than 100 years. WEINIG quality allows our partners in both handcrafts and industry around the world to stand out above the competition. We deliver machines and systems that set standards in performance and economy; intelligent production concepts for optimal value creation; and customized solutions for every operation from application through parts and service.

### **WEINIG offers more**



**Advantage  
Solutions, Inc.**  
*Your authorized Holz-Her dealer*

**Phone: 651.760.4355**

Email: [Sales@AdvantageSolutionsOnline.com](mailto:Sales@AdvantageSolutionsOnline.com)

[www.AdvantageSolutionsOnline.com](http://www.AdvantageSolutionsOnline.com)



Michael Weinig Inc.  
124 Crosslake Park Drive  
 Mooresville, NC 28117  
704.799.0100  
[sales@weinigusa.com](mailto:sales@weinigusa.com)  
[sales@holzherusa.com](mailto:sales@holzherusa.com)  
[www.weinigusa.com](http://www.weinigusa.com)  
[www.holzherusa.com](http://www.holzherusa.com)