

100 Percent. Repetition Accuracy. Multifunctional.

ACCURA



PRODUCTIVITY AND PRECISION



Accuracy in Every Detail

Designed for highest requirements in terms of quality and flexibility.

The ACCURA series stands for complete processing of modern edging and panel materials. Program selection allows the machine to be set up without even opening the hood, so that it is ready for production immediately.

The HOLZ-HER ACCURA series sets the highest, professional standards for edgebanding without compromises.

- Maximum precision and processing reliability for many years with torsionally stiff, welding machine columns.



Video
ACCURA



Illustrations may contain
optional features.

- Ergonomic operation with rotating and pivoting 18.5" touch screen control panel. Comprehensive program memory with complete storage of all operating data as well as service messages in clear text.
- Fully automatic control of machining units at the touch of a button using NC servo-axes without opening the hood.



Intelligent energy management for HOLZ-HER edgebanders.



For short intervals between workpieces and optimized edge protrusions.

Glu Jet – Invisible Joints with Thin Film Technology

The clear advantages of our hybrid technology in combination with the new HOLZ-HER thin film technique make this gluing system the all-rounder for craftsmen and industrial users. Visual zero joints with PUR glue – allowing use in wet areas – are natural for HOLZ-HER customers.

Wafer-thin glue joints, easily equivalent to industrial laser edges, are easy to achieve with the HOLZ-HER Glu Jet system, which also offers unrivaled flexibility.

Superior appearance on all materials – starting with state-of-the-art, high gloss edging right up to solid wood edging with extremely large cross-sections, HOLZ-HER remains unequalled for variety. Set the trends and standards for tomorrow today.

Glue Change and Cleaning Require Only 3 Minutes Each



Heat-up time
3 minutes

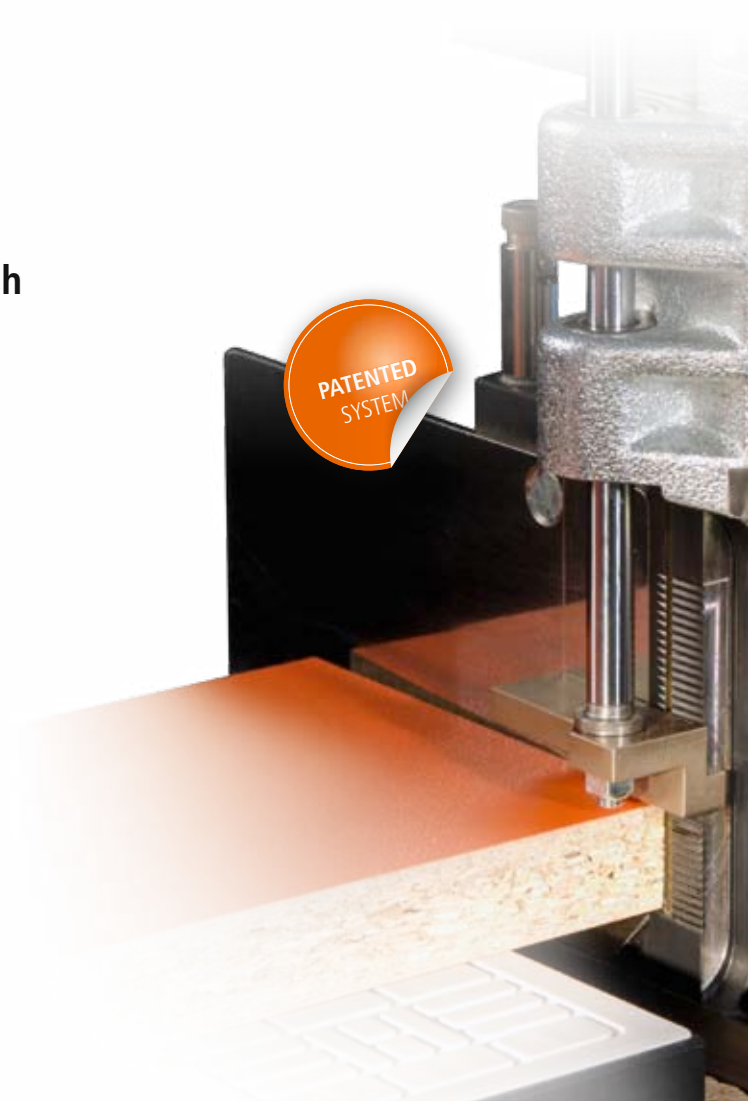


Glue change*
3 minutes

* to PUR glue, to EVA glue and color change



Cleaning
3 minutes





PUR Glue is the Standard for Professional Cabinet Makers

Industrial technology for small shops – with the HOLZ-HER Glu Jet system, you can process PUR glue on a standard basis; just as simply as EVA glue. Strong arguments for you and your customers:

- No glue pots.
- No expensive nitrogen tanks.
- High strength joint for extremely long service life.
- Resistant to heat and water, providing quality advantages in all areas of cabinetmaking.

Video
Glu Jet



Invisible joints

Video
Glu Jet



Functional principle



Glu Jet XL – Edgebanding at the Highest Level

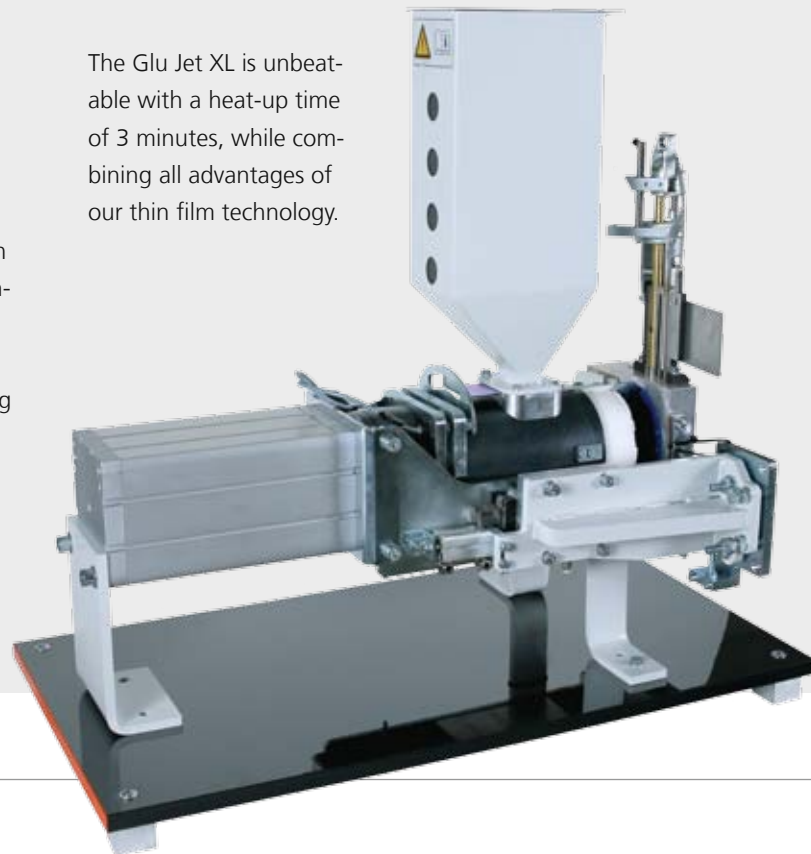
Glue Application System for PUR

For the ACCURA series HOLZ-HER offers the Glu Jet XL with greater melting capacity for even higher feed rates.

With the Glu Jet XL, users can process 2 kg PUR glue cartridges (Fig. 3, below), which are significantly more economical than conventional PUR granules.

This investment is clearly worthwhile beginning at consumption rates of approx. 400 kg of PUR glue per year, or approx. 2 kg per day. The savings for glue costs alone already amortize the machine during the second year.

The Glu Jet XL is unbeatable with a heat-up time of 3 minutes, while combining all advantages of our thin film technology.



Glue Granules

Naturally, the station can also be used for processing glue granules (Fig. 1) making it extremely flexible for HOLZ-HER customers and offering every user major competitive advantages.

Cleaning the system is child's play with standard PUR cleaners (Fig. 2) using an automatic cleaning program integrated into the control.





Even More Flexibility with Double Gluing Station

The generous entrance area on the ACCURA allows a second Glu Jet for a double gluing station in addition to the classic Glu Jet station. This allows realization of applications possible only with high set-up times until today. PUR and EVA glue can be selected on the touch screen. While one gluing station is working, the other is automatically retracted and can then be put back into operation at the touch of a button.

The highly popular combination of neutral and colored glue is also possible. Finally, special nozzles for use on thick solid wood edges can be combined with thin film nozzles for a zero joint appearance. These are also ready for use after a heat-up time of only 3 minutes.

Perfect flexibility saves time:

- EVA and PUR glue continuously available for change-over.
- Neutral and/or colored glue continuously available for change-over.
- 2 kg PUR glue (Glu Jet XL) and Glu Jet.
- Glu Jet with thin film technology combined with solid wood nozzle for edge cross sections of 20 x 65 mm.



Edge Control Touch –
high standards for future-proof design.

Edge Control Touch

The HOLZ-HER Edge Control Touch provides extremely high performance and is exemplary for its simple operation. Ergonomic, simple and uniform tablet design.

Display

- 18,5"-touch screen with 16:9 format.
- Brilliant graphic display of machining process
- Simple operation – rotating and swiveling control panel at eye height.

Operation

- Electronically controlled set-up processes with 100 percent repetition accuracy.
- Clear and complete acquisition of all operating data: Total running meters, total parts, total hours with reset.
- Custom user management with password protection and single authorization.

Equipment/Service

- Network connectivity.
- Online maintenance, rapid exchange of data with HOLZ-HER service department.
- Barcode interface for automatic program call-up.
- External USB port for data backup and system updates.
- Connection to HOLZ-HER process data acquisition system for direct read-out of operating data (optional).

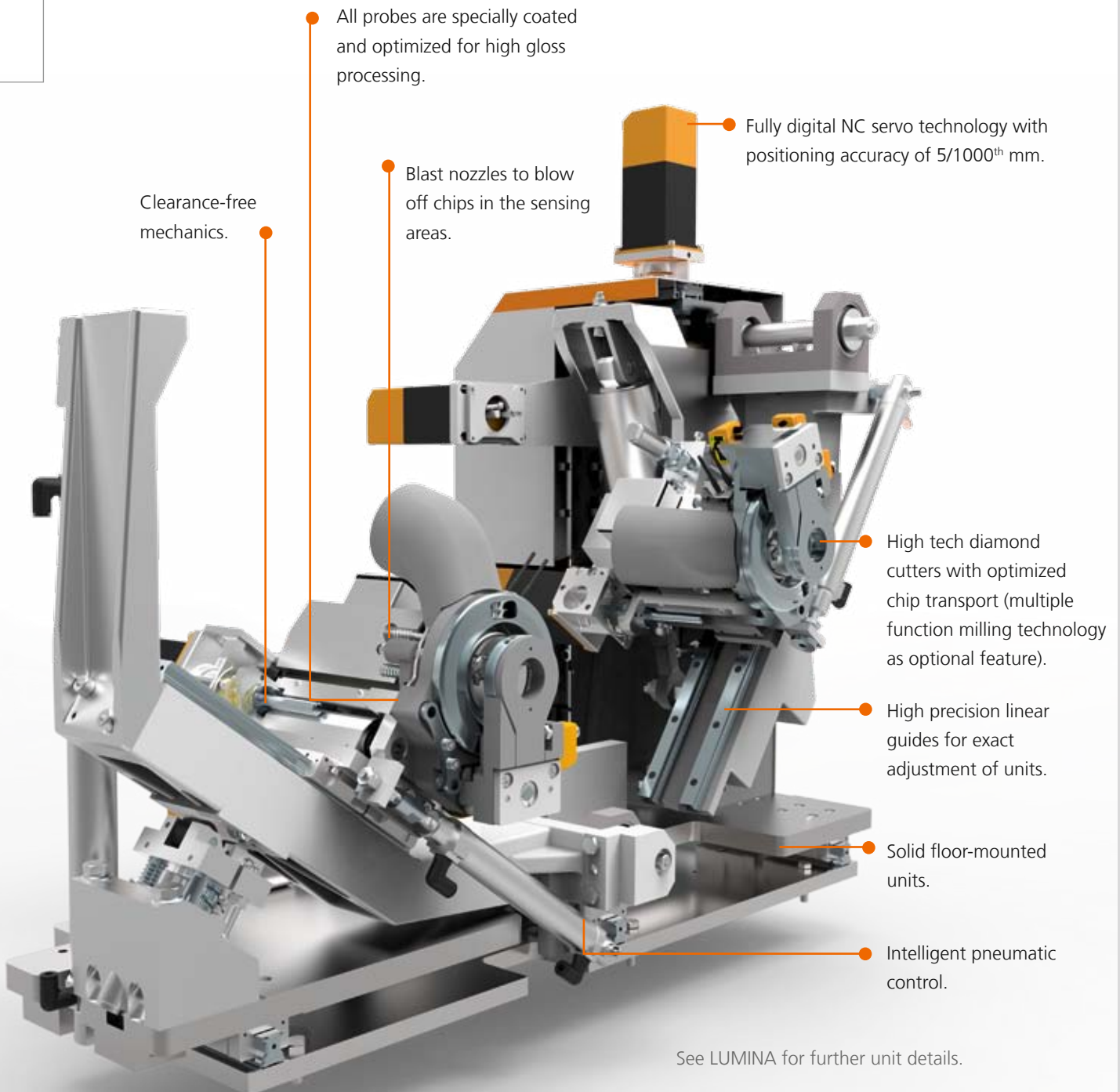


Rotating and pivoting control panel.

Units for 100 Percent Repetition Accuracy!

All units must satisfy maximum requirements right down to the last detail to obtain the same, precision results repeatedly at high processing rates. The shaping cutter unit is an example of what is important.

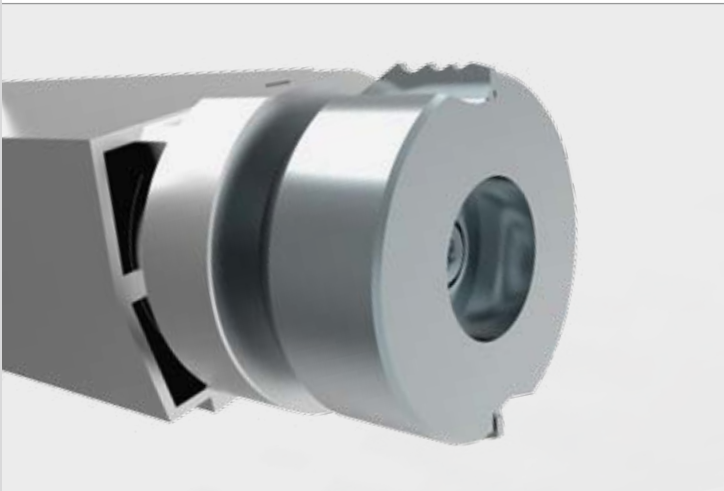
Because 100 percent repetition accuracy is highly significant for professional edgebanding.



See LUMINA for further unit details.

Multifunctional Package (Option)

The multifunctional package for cutting, corner copying and radius scraping provides a perfect appearance for all your normal edgebanding processes, such as flush cutting, varying radiuses and chamfers. Tool-changing is a completely automatic process via the NC servo-axes, multistage tooling technology and zero-clearance mechanisms for maximum precision.

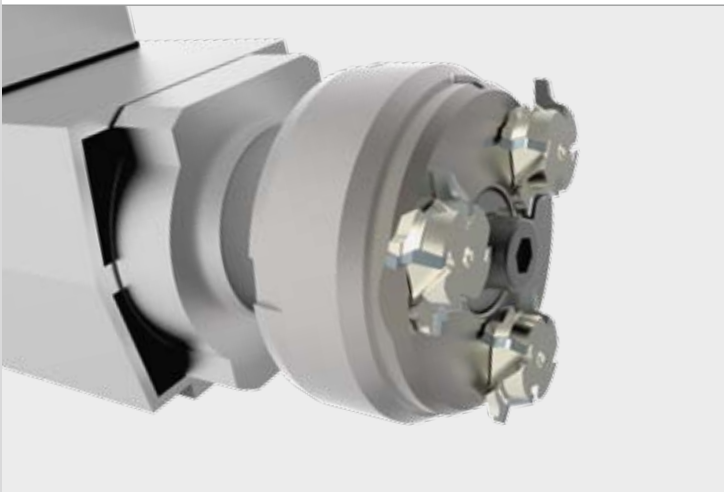


Multistage Cutter Unit

With 6 NC servo-axes and diamond combination tool.

- Radius 1.3
- Radius 2 (double)
- Flush up to 8 mm
- Bevel 45°

Other tool configurations available on request!

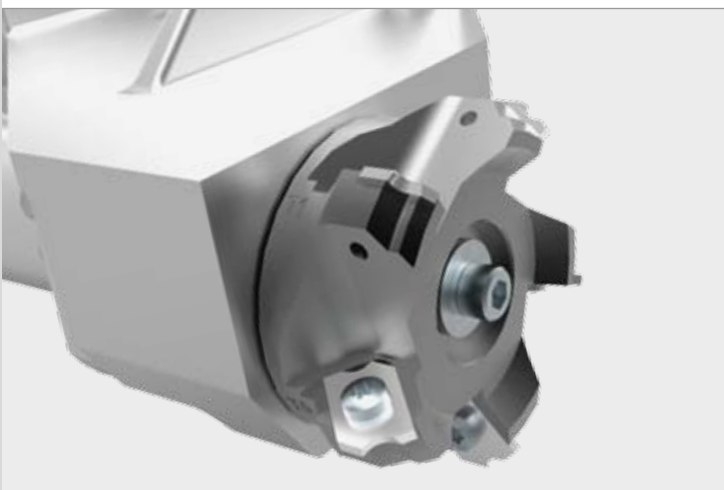


Revolving Cutter Unit – quattro^{shape}

With 6 NC servo-axes and diamond revolving tool.

- Radius 1.3
- Radius 2 (double)
- Chamfer 45°

Other tool configurations available on request!



Revolving Scraper Unit

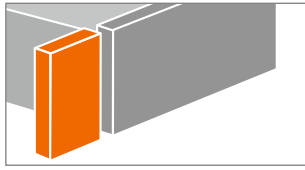
With 8 NC servo-axes and HW standard scrapers on a fully automated 5-position revolving tool.

- Radius 1
- Radius 1.3
- Radius 2 (double)
- Chamfer 45°

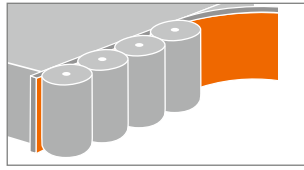
Other tool configurations available on request!

Adaptive Package

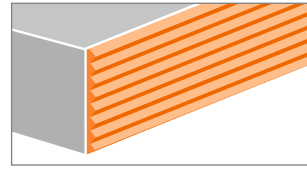
Adaptive pressure and glue quantity control for intelligent automation.



Adaptive trimming blade



Adaptive pressure unit



Automatic glue quantity control

Simple Handling – High Productivity

■ Workpiece Support

Extremely stable, extending workpiece support, completely self-supporting and thus independent of irregularities in floor (optional) (Fig. 1).

■ 6-fold Edging Feed

With sensor for recognition of remaining length and automatic change-over to alternative edging channel. Including auxiliary shaft for feeding in cut-length edging (optional) (Fig. 2).

■ Air Cushion Table

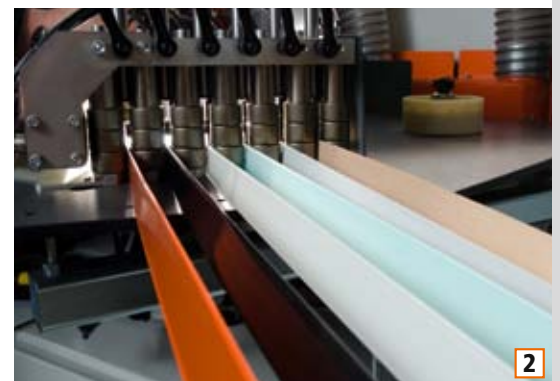
For easy and careful handling – even with bulky work pieces (optional) (Fig 3).

■ Nesting Package

For concealed hinge holes or trapezoidal work (optional) (Fig. 4).

■ Transport Chain Lubrication

Intelligent automatic transport chain lubrication. Sensor-controlled unit, for metering lubrication to match load (optional).



Tool Versions for ACCURA 15 Series

Maschine	ACCURA 1554 automatic	ACCURA 1556 premium	ACCURA 1556 grooving	ACCURA 1556 flex	ACCURA 1558 performance	Options
Control	18,5" Touch screen	18,5" Touch screen	18,5" Touch screen	18,5" Touch screen	18,5" Touch screen	
Bridge	Roller bridge*	Roller bridge*	Roller bridge*	Roller bridge*	Belt bridge	*Belt bridge
Edge feeder	SYNCHRO*	SYNCHRO*	SYNCHRO*	SYNCHRO*	SYNCHRO*	*6-fold magazine
Jointing	60 mm*, Ø 70 mm	60 mm*, Ø 70 mm	60 mm*, Ø 70 mm	60 mm*, Ø 70 mm	60 mm MOT 2, Ø 100 mm	*60 mm MOT 2, Ø 100 mm
Glue application	Glu Jet* automatic	Glu Jet* automatic	Glu Jet* automatic	Glu Jet* automatic	Glu Jet* automatic	* Glu Jet XL PUR unit (2-kg cartridge)
Glue application	*	*	*	*	*	* Glu Jet double gluing station
Pressure unit	4 motor-driven rollers	4 motor-driven rollers	4 motor-driven rollers	4 motor-driven rollers	4 motor-driven rollers	
End trimming	15 mm*	15 mm*	15 mm*	15 mm*	15 mm*	*20 mm with solid wood package
Cutter 1	x	Flush 15 mm*	x	x	Flush 15 mm*	*+ MOT versions (20 mm)
Cutter 2	Radius 2 mm*	Radius 2 mm*	Radius 2 mm*	Radius 2 mm*	Radius 2 mm*	*Multifunctional package for cutting, corner copying and radius scraping
Corner copying	60 mm, MOT 4*	60 mm, MOT 4*	60 mm, MOT 4*	60 mm, MOT 4*	60 mm, MOT 4*	
Radius scraper	MOT*	MOT*	MOT*	MOT*	MOT*	
Flat scraper	Application controlled*	Application controlled*	Application controlled*	Application controlled*	Application controlled*	*with pre- and post-sensing
Buffing	Application controlled*	Application controlled*	Application controlled*	Application controlled*	Application controlled*	*oscillating
Corner buffing	x	x	x	Application controlled	Application controlled	
Grooving	x	x	MOT 2	x	*	*MOT 2
Spraying device						

 Standard
 Optional
 x Not available
 Free space

	ACCURA 1554 automatic	ACCURA 1556 premium	ACCURA 1556 grooving	ACCURA 1556 flex	ACCURA 1558 performance
Technical Data					
Overall length A (mm)	7540	8085	8085	8085	8755
Total length with air cushion table and extended discharge B (mm)	8990	9450	9450	9450	10120
Width x height (mm)	1368 x 2223	1368 x 2223	1368 x 2223	1368 x 2223	1368 x 2223
Weight (kg)	2750	3000	3000	3000	4200
Feed Rate					
Feed speed (m/min)	10–20(25)	10–20(25)	10–20(25)	10–20(25)	10–25
Working Dimensions					
Minimum workpiece length (mm)	140	140	140	140	140
Minimum workpiece width (mm)	60	60	60	60	60
Workpiece thickness (mm)	6–60	6–60	6–60	6–60	6–60
Edge width (mm)	0.4–8(15)	0.4–15	0.4–8(15)	0.4–8(15)	0.4–15(20)

